

The goal of our preschool program is to provide each child with many age appropriate learning experiences in a loving Christian environment. At Our Savior we emphasize the "whole child" which stresses: spiritual, cognitive, language, social, emotional, creative, large motor and fine motor skills and development. Themes are used to introduce and develop concepts through large group experiences, small group experiences, play, exploration, and the use of centers.



Communication between home and school begins with a "home visit" in August (for those already registered) and continues with weekly newsletters or monthly calendars and updates.

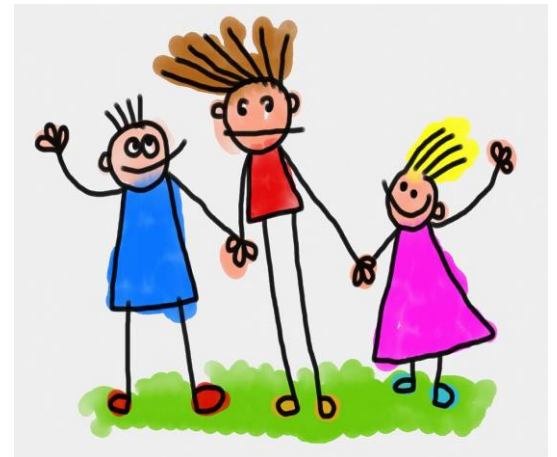
Our Savior Lutheran School is a mission of and is supported by our church. All students are enriched by priceless learning experiences and are able to develop life-long friendships. Our tuition reflects the cost of providing quality education and programs.

We welcome children without restriction due to race, color, gender, nationality or ethnic origin to enroll at our school.

If you do not have a church home we invite you to worship with us. If you are interested in finding out more about Our Savior Lutheran Church membership, please contact Pastor Cook at 426-1130.



Building a Christian
Foundation Today...
Teaching Toward Tomorrow



**Preschool Tuition
and Fees 2023-2024**

8307 Nottingham Parkway
Louisville, Kentucky 40222
502-426-0864
www.oslslouisville.com

Registration

\$150.00 New Student
Registration Fee

Registration fees are due with the registration application form.

This one-time fee is non-refundable

Registration form and fees must be received and approved 5-7 days prior to student starting classes.

Payment Options

- Pay entire tuition by June 15, 2023 with cash, check or bank draft
- Pay 2 equal payments on August 15, 2023 & January 15, 2024 by bank draft. This option will incur an additional fee of \$100 per payment (\$200 annual per immediate family)
- Pay 10 equal monthly payments (Aug-May) made on the 1st or 15th of each month. This option will incur an additional fee of \$40 per payment (\$400 annual per immediate family)

Preschool Tuition

2DPS is Two Day Preschool on Tuesday & Thursday for **3 yr. olds only** until 11:30 a.m.

3DPS is Three Day Preschool on Monday, Wednesday & Friday for **3 or 4 yr. olds** until 11:30 a.m.

5DPS is Five Day Preschool on Monday thru Friday for **3 or 4 yr.** olds until 11:30 a.m.

CC includes childcare or extended day options before and after regular preschool.

Preschool DOES follow the same calendar as the grade school
Regular hours of operation are M-F, 7:00 a.m. to 6:00 p.m. Rates below are for dismissal 11:30am, 3:15pm or 6:00pm.

3 YEAR OLD ONLY

	<u>YEAR</u>
2DPS Only	\$2538
2DPS/2DCC-3:15	\$4456
2DPS/2DCC-6:00	\$4826

3 & 4 YEAR OLD

	<u>YEAR</u>
3DPS Only	\$3388
3DPS/3DCC-3:15	\$6082
3DPS/3DCC-6:00	\$6601

3 & 4 YEAR OLD

	<u>YEAR</u>
5DPS Only	\$5455
5DPS/5DCC-3:15	\$10,083
5DPS/5DCC-6:00	\$10,953

Other Required Fees

Milk Fees: \$ 0.50 per day
(AM snack, applied to lunch account each day)

Family PTL Fee: Varies per family (\$40-\$150 depending of # of children per family. Required for classroom parties and other school related events)

*Tuition costs include daily snack, curriculum, technology and yearbook fees. Tuition **DOES NOT** include lunch. Students my bring lunch or purchase hot lunch on full days of school.*

All tuition must be kept current and paid in full by then end of the school term.

All preschool students must be fully toilet trained in order to attend

Our Savior Lutheran School complies with all medical requirements as specified by Kentucky State Law. All required forms must be current and received in a timely manner or students may not be allowed to attend.

We also follow the state of Kentucky guidelines for school enrollment.

Students must turn 3, 4 or 5 on or before August 1st of the current school year to be considered for enrollment in the preschool or kindergarten classes.